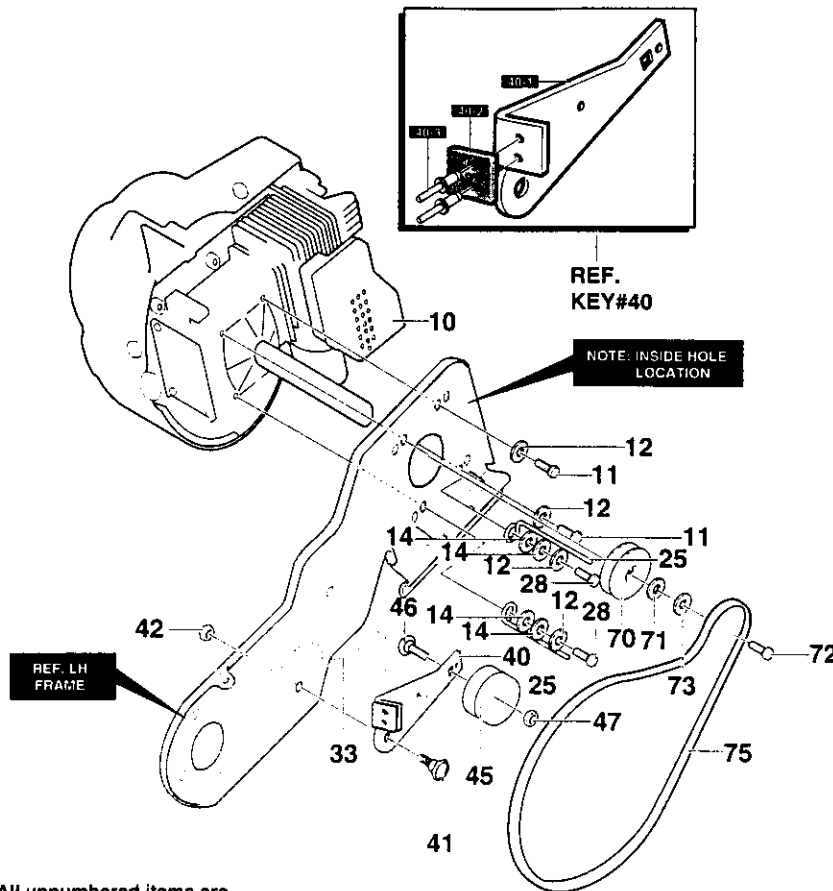


PROD.NO: 968 87 04-10
ENGINE: Tecumseh
HSK -600-1688S

SPAREPARTS
107 25 57-64

ENGINE ASSEMBLY



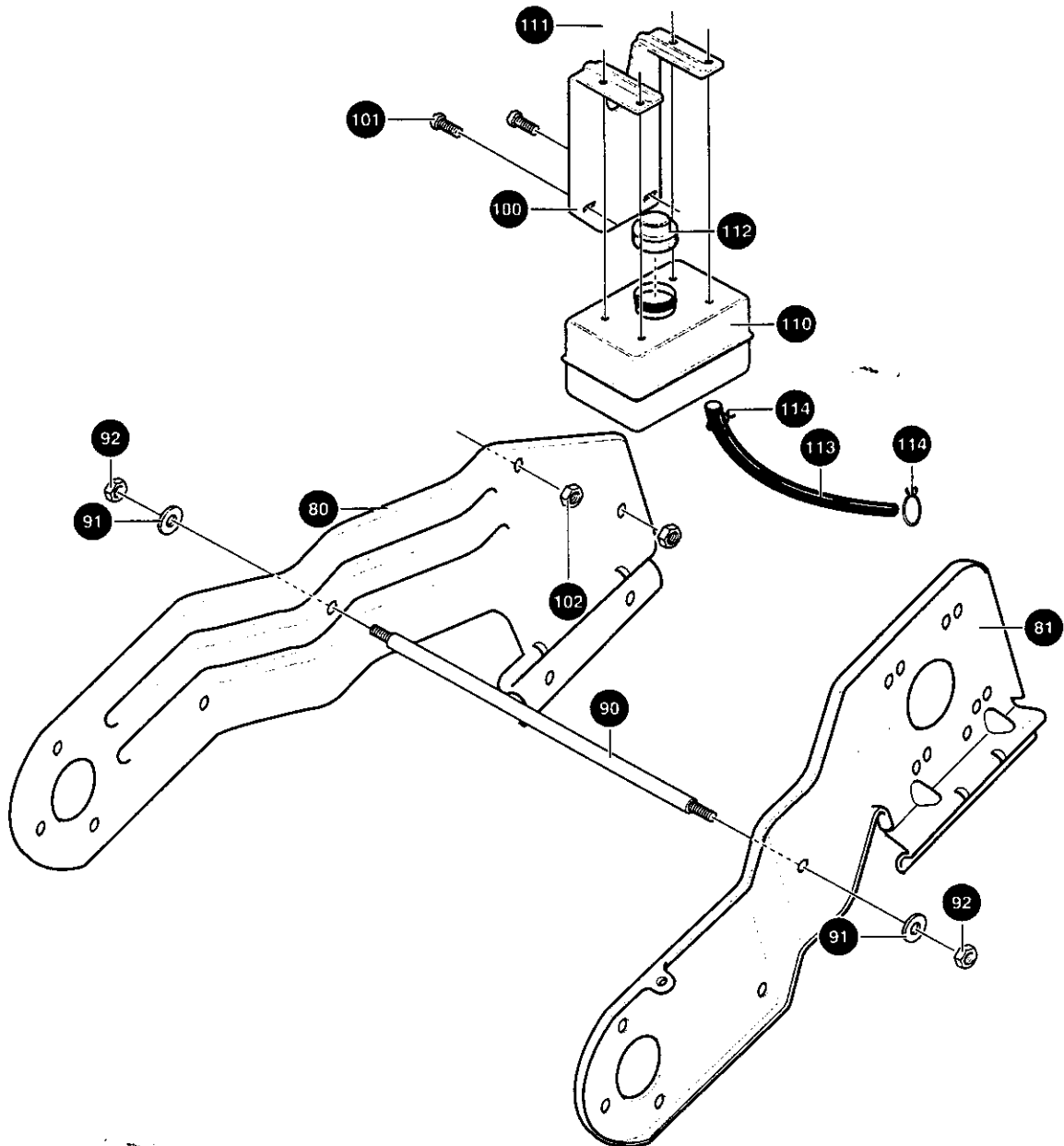
All unnumbered items are interchangeable with opposite side

Note: Always use original equipment parts. Use of service/replacement parts other than original parts may void your warranty.

REF NO.	PART NO.	PART NAME
10	-	ENGINE, 3HP (SEE ENGINE MANUAL)
11	874 78 05-12	SCREW, 5/16-18X .75
12	810 04 05-00	WASHER, HVSP TLK .328X.60X.09
25	533 31 34-40	GUIDE, BELT
28	874 78 05-16	SCREW, 5/16-18X1.00
33	533 33 90-17	SPRING, IDLER BRAKE
40	533 76 09-41	ASSY, IDLER ARM
40-1	533 76 13-31	BRACKET, IDLER
40-2	533 76 02-74	BRAKE PAD - HARD
40-3	533 04 16-01	RIVET
41	533 33 35-94	BOLT, 5/16-18

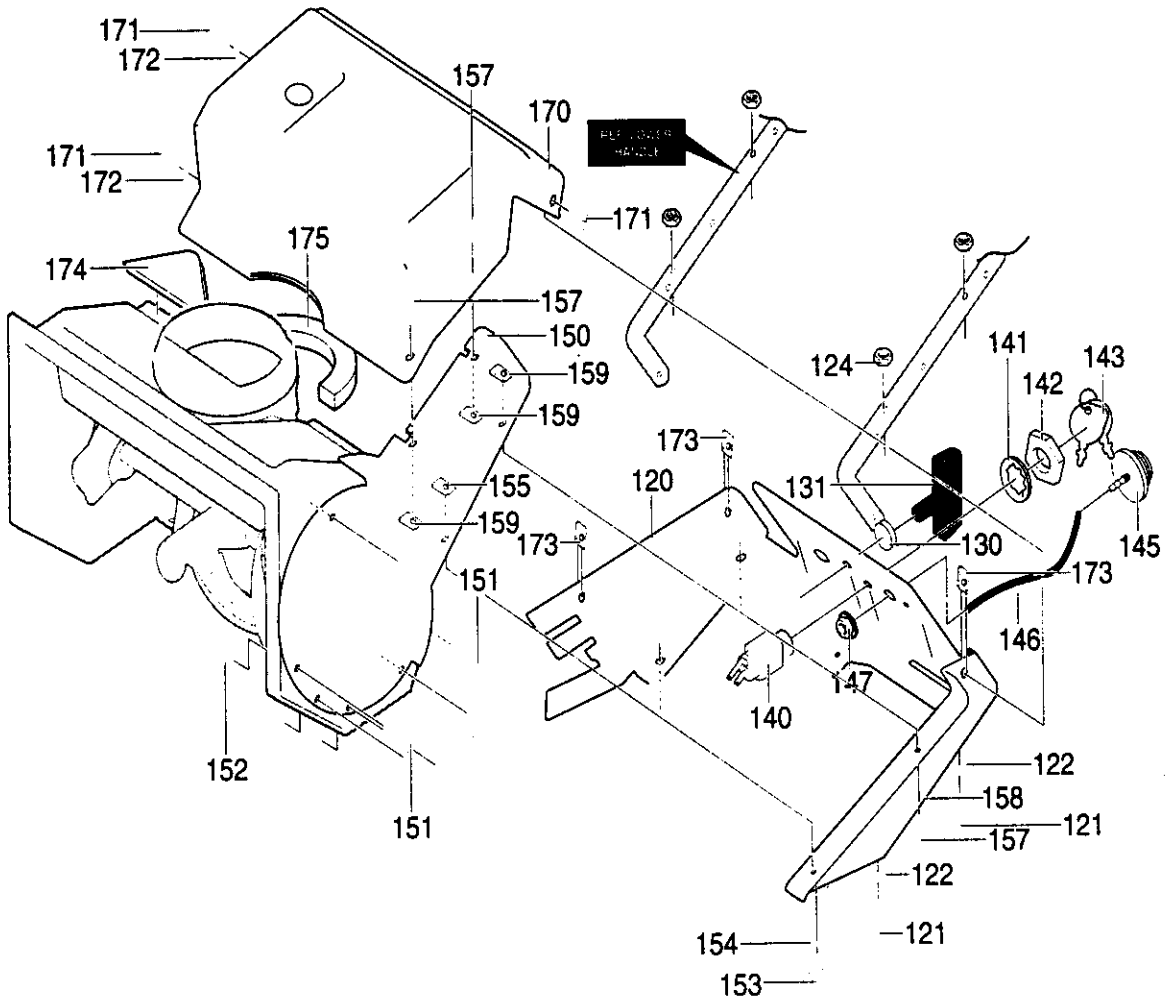
REF NO.	PART NO.	PART NAME
42	873 68 05-00	NUT, 5/16-18 REGHEX CTRLK
45	533 04 89-24	PULLEY, IDLER
46	533 04 58-92	BOLT, 3/8-16X1.50
47	533 04 15-29	NUT, 3/8-16 HX CTRLKJAM
70	533 33 88-49	PULLEY, ENG
71	533 02 58-40	WASHER, SPR
72	533 18 15-95	SCREW, 5/16-24X .75
73	810 04 05-00	WASHER, SPLITLOCK
75	533 76 09-28	BELT, V 3L 34.8"

FRAME COMPONENTS ASSEMBLY



REF NO.	PART NO.	PART NAME
80	533 76 02-72	FRAME, SIDE RH
81	533 76 02-71	FRAME, SIDE LH
90	533 76 01-69	ROD, SUPPORT 16.70
91	533 07 10-63	WASHER, REGSPTLK. 393X.68X.10
92	873 22 06-00	NUT, 3/8-16
100	533 05 06-49	BRACKET, GAS TANK
101	874 76 04-12	SCREW, 1/4-20X .75 HHC
102	533 07 38-26	NUT, 1/4-20 REGHEXCTRLK
110	533 05 53-81	TANK, FUEL
111	533 00 12-57	SCREW, 1/4-14X .88
112	533 00 12-57	GAS TANK CAP
113	533 32 72-90	TUBING, GAS LINE
114	533 04 73-45	CLAMP, HOSE

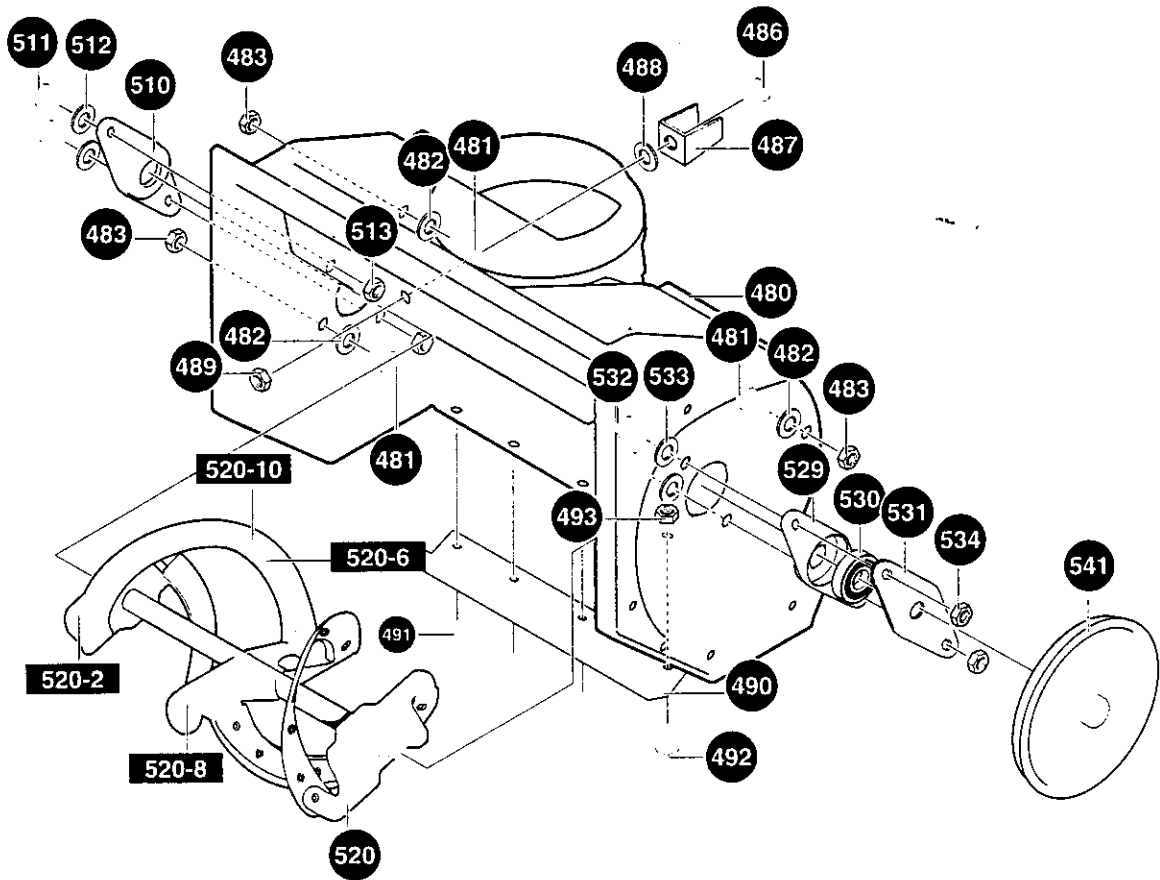
TOP COVER ASSEMBLY



REF NO.	PART NO.	PART NAME
120	874 78 04-20	COVER, BOTTOM
121	874 78 04-20	SCREW, 1/4-20X1.25
122	533 07 10-67	WASHER, FLAT .281X .63X.065
124	873 22 04-00	NUT, 1/4-20 REGHEXCTRLK
130	533 05 75-87	GROMMET & WASHER, ROPE GUIDE
131	533 33 36-43	KNOB, STAND TEE
140	533 05 69-92	SWITCH, IGNITION
141	533 13 85-57	WASHER, REGINTLK .640X1.1X.05
142	533 04 81-40	NUT, 5/8-32
143	533 04 96-43	2 KEYS & RING, ASSY
145	533 05 46-01	PRIMER, ENGINE
146	533 0012-59	HOSE, PRIM
147	873 22 04-00	NUT, 1/4-20 REGHEXKEPS
150	533 30 88-02	COVER, BELT 2CY
151	533 27 47-07	SCREW, 10-24X .50

REF NO.	PART NO.	PART NAME
152	873 27 10-00	NUT, #10-24 REGHEXCTRLK
153	874 78 04-08	SCREW, 1/4-20X .50
154	533 07 10-67	WASHER, FLAT .281X .63X.065
155	533 05 06-69	NUT, 1/4-20 TINN U
157	533 05 60-21	SCREW, 1/4-14X .75
158	533 07 10-67	WASHER, FLAT .281X .63X.065
159	533 04 94-41	NUT, 1/4-10 SPEED JTYPE
170	533 33 64-52	COVER, TOP
171	533 05 60-21	SCREW, 1/4-14X .75
172	533 07 10-67	WASHER, FLAT .281X .63X.065
173	533 04 94-41	NUT, 1/4-10 SPEED J TYPE
174	533 05 53-79	SEAL, STRIP
175	533 05 53-80	SEAL, STRIP

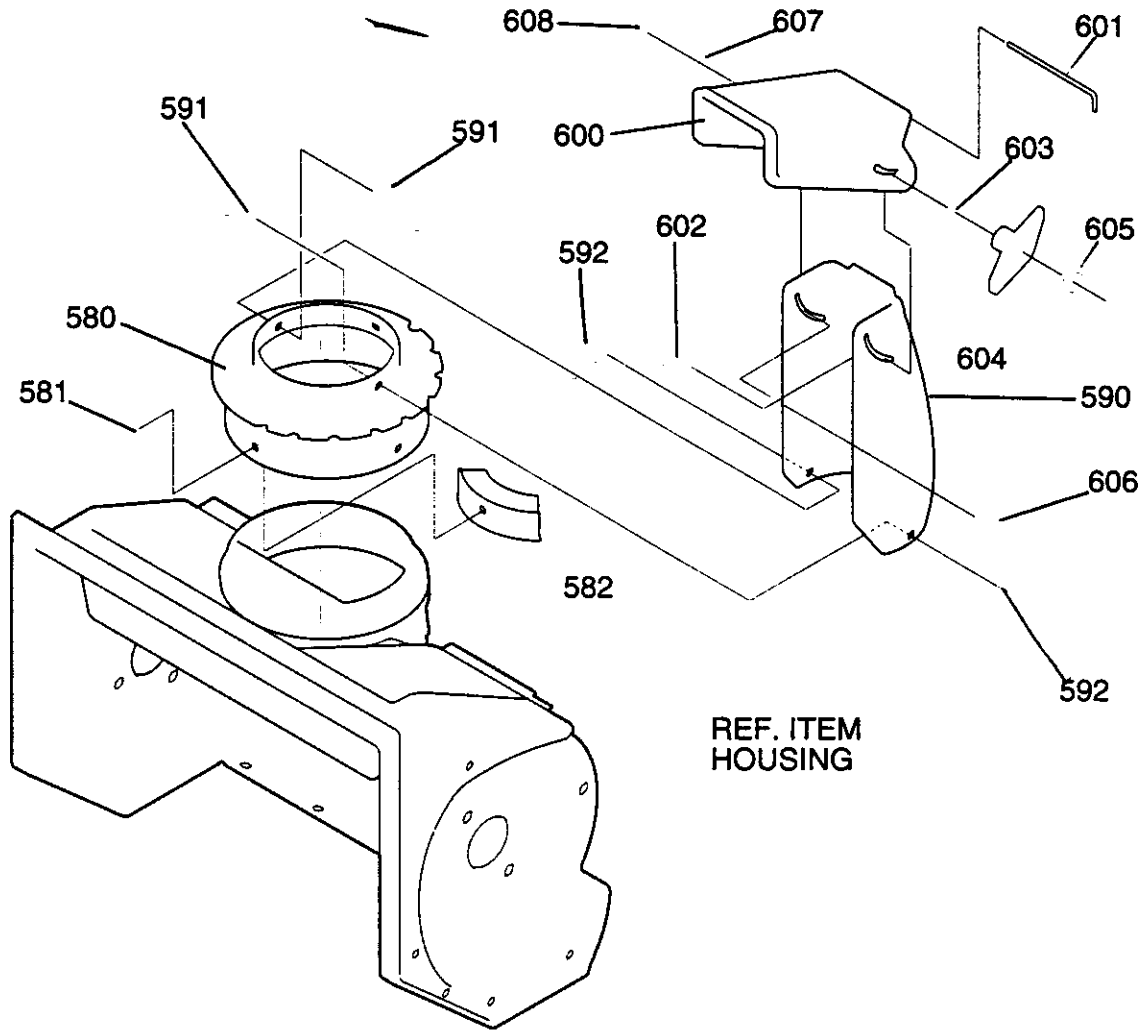
AUGER HOUSING ASSEMBLY



REF NO.	PART NO.	PART NAME
480	533 33 13-37	ASSY.HOUSING
481	533 18 00-20	SCREW, 1/4-20X .75
482	533 07 10-67	WASHER, FLAT .281X .63X.065
483	873 22 04-00	NUT, 1/4-20
486	871 07 04-10	SCREW, 1/4-20X .63
487	533 33 11-26	BRACKET, STOP
488	533 33 12-11	WASHER, FLAT .333X .87X.119
489	873 22 04-00	NUT, 1/4-20
490	533 33 40-31	BLADE, SCRAPER
491	533 57 77-07	RIVET
492	533 18 00-20	SCREW, 1/4-20X .75
493	533 04 89-31	NUT, 1/4-20 WDFL
510	533 57 70-23	BRNG, FL
511	533 71 02-63	SCREW, 1/4-20X1.00

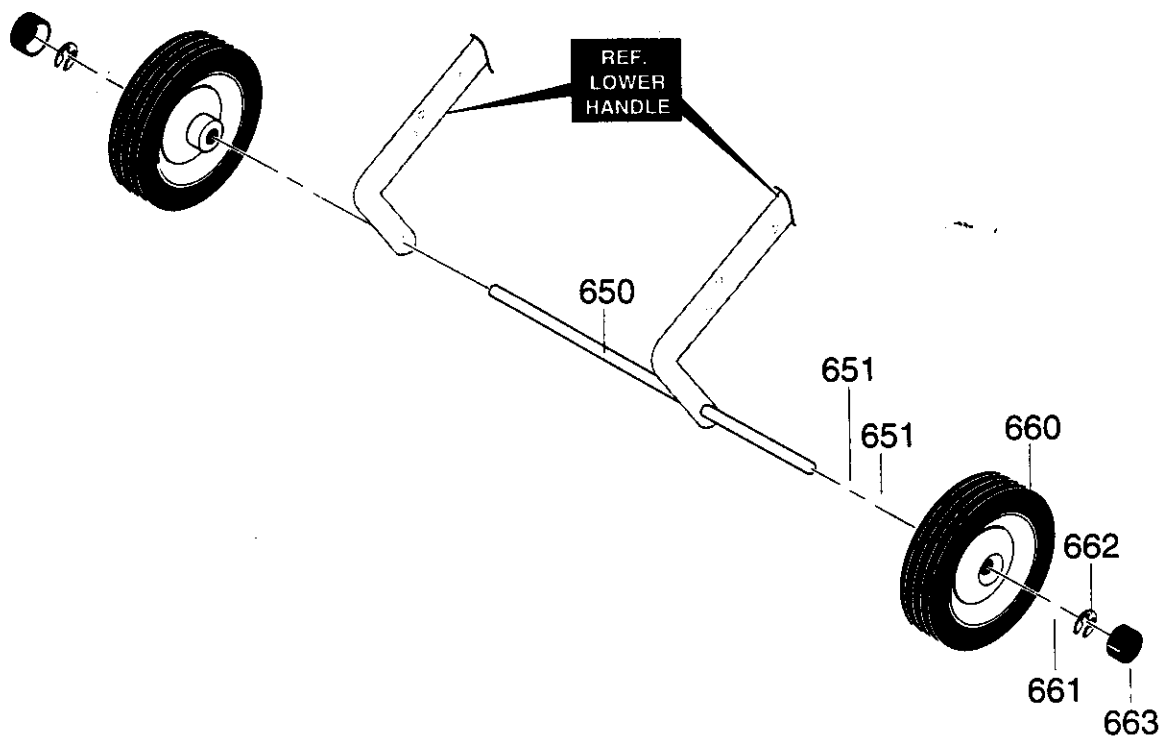
REF NO.	PART NO.	PART NAME
512	533 07 10-67	WASHER, FLAT .281X .63X.065
513	533 04 69-31	NUT, 1/4-20
520	533 31 24-07	AUGER, ASSY
520-2	533 30 25-65	AUGER BLADE
520-6	533 04 98-38	RIVET
520-8	533 33 59-92	BLADE CENTER
529	533 58 02-51	RETAINER, BEARING
530	533 04 38-46	BRNG, BALL
531	533 33 42-87	PLATE,RETNR BRNG
532	533 18 00-18	SCREW, 1/4-20X .62
533	533 07 10-67	WASHER, FLAT .281X .63X.065
534	873 22 04-00	NUT, 1/4-20 REGHEXCTRLK
541	533 33 89-65	PULLEY, V3L 6.00

DISCHARGE CHUTE ASSEMBLY



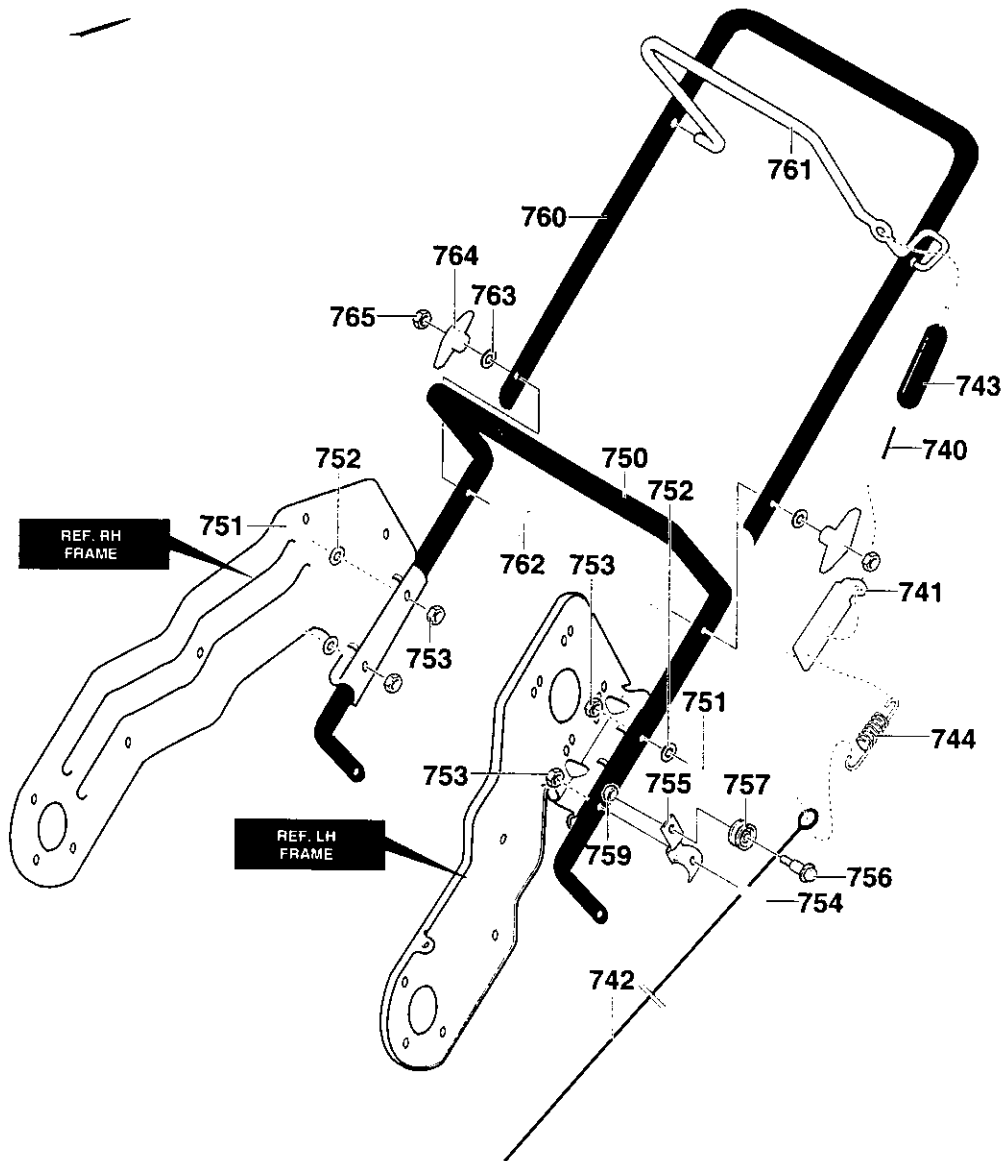
REF NO.	PART NO.	PART NAME
580	533 31 33-07	RING, CHUTE
581	533 30 03-02	SCREW, #10 X .50
582	533 57 70-21	GUIDE, CHUTE
590	533 33 64-51	CHUTE, LOWER
591	874 78 04-08	SCREW, 1/4-20X .50
592	873 22 04-00	NUT, 1/4-20
600	533 30 76-65	CHUTE, UPPER
601	533 30 89-31	WIRE, HINGE
602	872 11 05-10	BOLT, 5/16-18X1.25
603	734 11 62-71	WASHER, FLAT .344X .69X.065
604	533 01 35-27	KNOB, T
605	873 22 05-00	NUT, 5/16-18
606	874 78 05-12	SCREW, 5/16-18X .75
607	734 11 62-71	WASHER, FLAT .344X .69X.065
608	873 22 05-00	NUT, 5/16-18 REGHEXCTRLK

WHEELS ASSEMBLY



REF NO.	PART NO.	PART NAME
650	533 31 36-78	AXLE, 7X1.5 DIA.
651	533 58 34-09	WASHER, FLAT .391X1.0OX.125
660	533 76 07-14	TIRE & RIM
661	533 58 34-09	WASHER, FLAT .391X1.0OX.125
662	533 57 75-98	RING, RET E.
663	533 57 70-37	HUB CAP

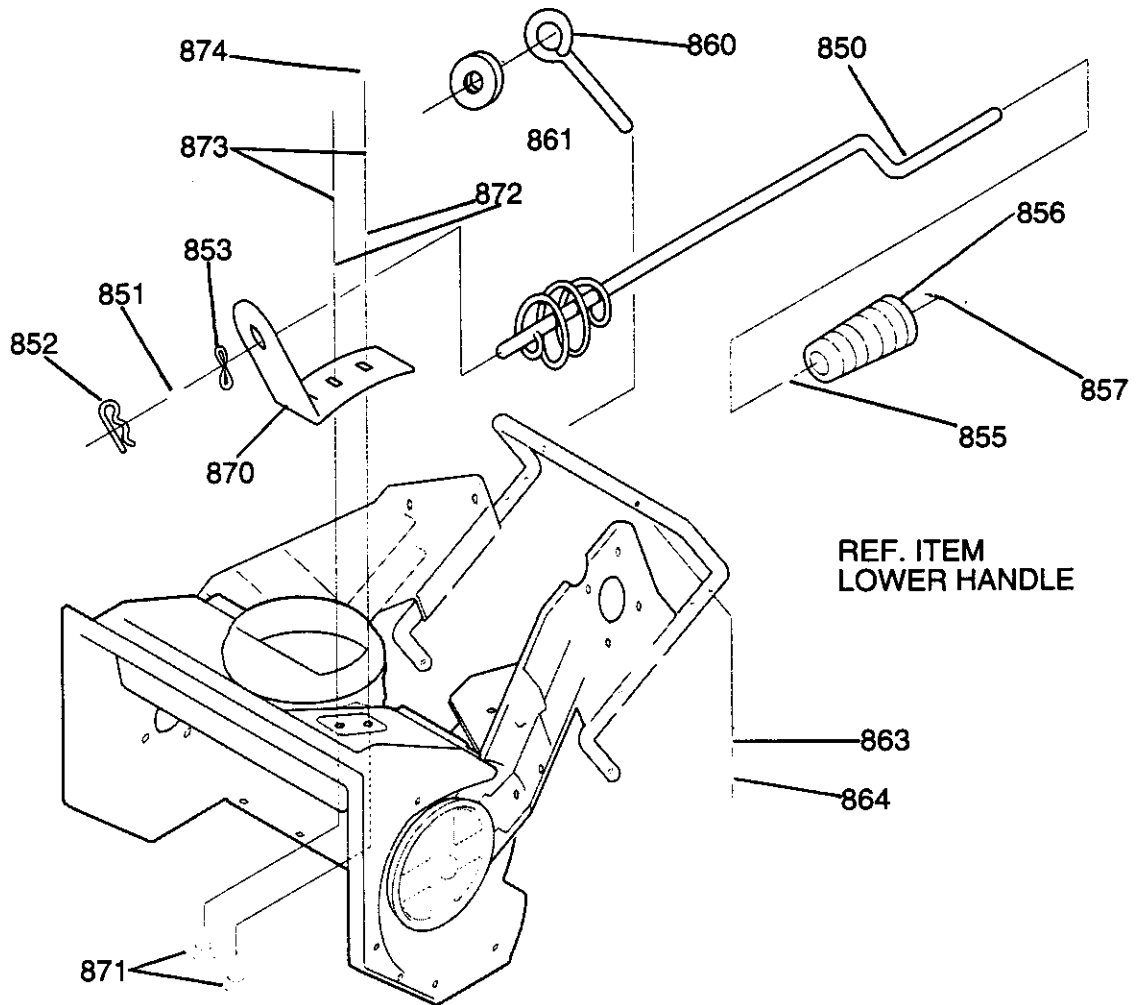
HANDLE ASSEMBLY



REF NO.	PART NO.	PART NAME
740	533 76 07-74	CABLE, UPPER
741	533 31 34-41	BRKT, CABLE ADJ
742	533 76 07-73	CABLE, LOWER CONTROL
743	533 30 81-46	BOOT, CLUTCH SPRING
744	533 31 34-71	SPRING, EXT.
750	533 31 34-87	HANDLE, LOWER
751	874 78 04-20	SCREW, 1/4-20X1.25
752	533 07 10-67	WASHER, FLAT .281X .63X.065
753	873 68 04-00	NUT, 1/4-20 REGHEXCTRLK
754	533 18 00-34	SCREW, 1/4-20X1.50
755	533 76 14-86	BRACKET, CABLE
756	533 05 83-36	BOLT, .375X .375
757	533 04 83-06	PULLEY, METAL

REF NO.	PART NO.	PART NAME
758	533 00 12-88	BRKT, CABLE RETAIN
759	873 68 04-00	NUT, 1/4-20 REGHEXCTRLK
760	533 33 72-14	HANDLE, UPPER
761	533 31 33-08	BAIL, CONTROL
762	533 33 75-84	BOLT, 5/16-18X2.00
763	533 31 19-36	WASHER, FORM
764	533 01 35-27	KNOB, T
765	873 22 05-00	NUT, 5/16-18

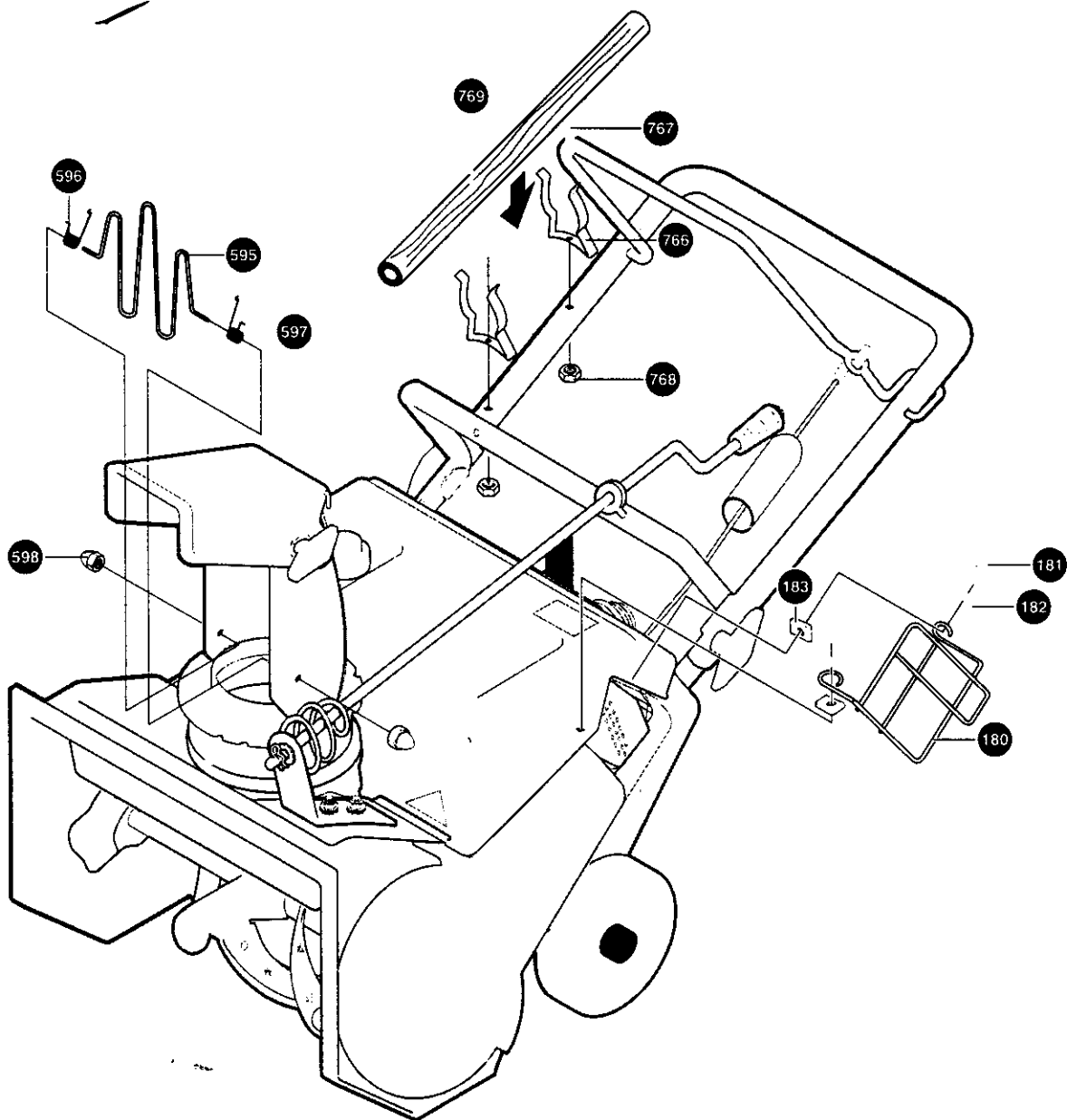
CHUTE ROD ASSEMBLY



REF NO.	PART NO.	PART NAME
850	533 31 49-96	ROD, ASSY UPR CHUTE
851	533 07 10-72	WASHER, FLAT .406X .81X.065
852	533 12 12-24	PIN, COTTER
853	533 31 34-31	WASHER, CURVED SPRING
855	533 07 10-72	WASHER, FLAT .406X .81X.065
856	533 05 70-82	KNOB, SLEEVE
857	533 33 15-32	NUT, PUSH, FITS
860	533 31 37-12	BOLT, EYE 3/8-16 X 2.00
861	515 40 01-48	GROMMET, EYE BOLT

REF NO.	PART NO.	PART NAME
863	533 07 10-63	WASHER, REGSPTLK .393X.68X.10
864	873 22 06-00	NUT, 3/8-16 HEXJAM
870	533 31 34-38	BRACKET, CHUTE ROTATE
871	872 14 05-06	BOLT, 5/16-18X .75
872	734 11 62-71	WASHER, FLAT .344X .69X.065
873	810 04 05-00	WASHER, HVSPTLK .328X.60X.09
874	873 22 05-00	NUT, 5/16-18 REGHEX

DECALS



REF NO.	PART NO.	PART NAME
180	533 05 71-39	GUARD, MUFFLER
181	874 78 04-10	SCREW, 1/4-20 X .62
182	734 11 53-01	WASHER, FLAT .281 X .63 X .065
183	533 05 06-69	NUT, 1/4-20
595	533 31 12-06	GUARD, WIRE LOWER CHUTE
596	533 05 17-76	SPRING, TORSION
597	533 05 17-77	SPRING, TORSION
598	533 04 91-06	NUT, ACORN
766	533 30 43-62	CLIPS, RETAINER